



Traditional Learning Plan

The purpose of this document is to provide clarity regarding campus protocols and procedures as we resume traditional learning. Updates and changes may be made to campus procedures as information and direction comes from the District, CDC, Dallas County, and the TEA. BBMS will continue to work to help ensure the safety and health of our Students, Staff, and Community.

BBMS Health & Safety Overview



- All Staff and Students will be screened prior to entering campus for symptoms and possible exposure
- All Staff and Students will have temperature read with contactless thermometer prior to entering campus
- Face coverings will be required for all Staff and Students
- Hallways are one way where possible and two way hallways have lanes
- Staff and Students expected to maintain social distance to the best of abilities and when possible
- Students will be provided individual desk shields (distributed upon delivery)
- Use of restroom during passing period prohibited
- Hand Sanitizer provided at all entrances, classrooms, and common areas
- Staff and Students encouraged to wash hands regularly

Face Coverings

- ALL students will be required to wear a face covering prior to entering school
- Face coverings may include either a mask or face shield, but must block both mouth and nose
- Students will be required to wear a face covering throughout the day with the exception of when they are eating at a social distance or in the restroom at a social distance
- Students riding a bus will be required to wear a face covering covering prior to entering the bus
- Teachers will be required to wear a face covering unless alone in their classroom

Morning Arrival & Entry Procedures



BARBARA BUSH
MIDDLE SCHOOL



- All arrival will be contactless; families will not be allowed to enter with students and are asked to remain in cars (unless prior authorization by Administration)
- All families are asked to screen students for COVID-19 symptoms each day prior to sending to school
- All entry will be through BBMS Cafeteria doors
 - In season athletes ONLY enter through Gym doors
- Doors will open each morning at 8:00AM
 - Families and Students are encouraged to not arrive prior to 8:00AM
- Students are expected to maintain social distance to the best of abilities and when possible

Morning Arrival & Entry Procedures



BARBARA BUSH
MIDDLE SCHOOL



- Each student will have a contactless temperature check and screening
 - Staff will monitor and refer to the stage in our cafeteria to be evaluated by our nurse if symptoms are present
 - Students who are ill are asked to be picked up within 30 minutes and no later than 1 hour from the time of campus contact
- All students will sanitize hands as they enter
- Between 8:00AM - 8:15AM:
 - Students will be directed by Staff to sit at a table in the cafeteria
 - Students eating breakfast may get a Grab & Go Meal
 - At 8:15AM students will be dismissed one table at a time to report immediately to their Homeroom Class

Morning Arrival & Entry Procedures

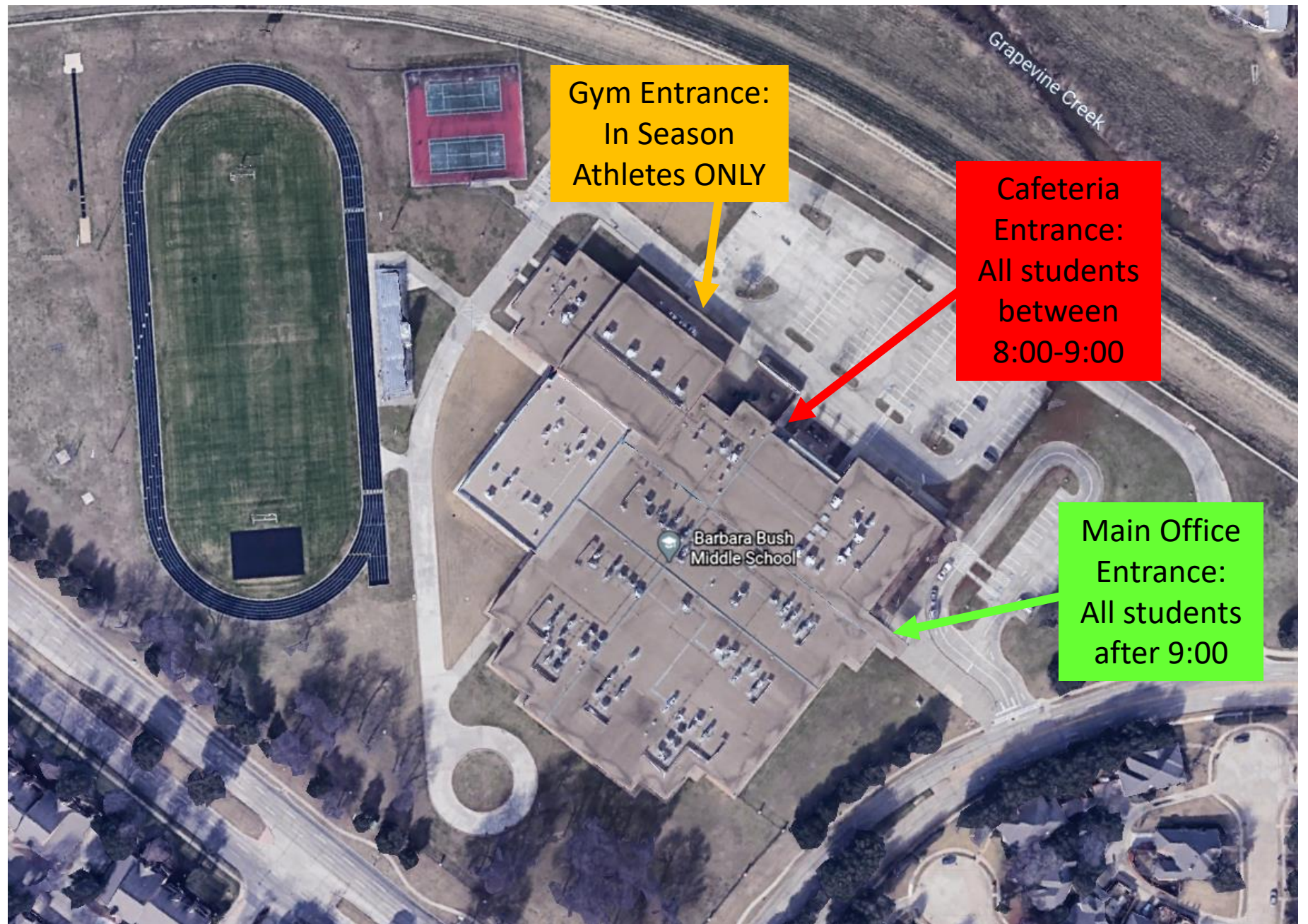


BARBARA BUSH
MIDDLE SCHOOL



- After 8:15AM:
 - Staff will continue with entry screening procedures
 - Students will be directed to immediately proceed to their Homeroom Class
- All students will be supervised in their Homeroom Classroom until school begins at 9:00AM
- All entry after 9:00AM will be through the Main Office Entrance with entry screening procedures

Morning Arrival & Entry Procedures



Classroom Procedures

- All classrooms provided with hand sanitizer and disinfectant
- Students will sanitize hands as they enter the classroom
- Students will be provided individual, desktop shields that they will carry from class to class (shields have been ordered and will be provided upon delivery)
- Rooms have been arranged to socially distance students as best possible
- Students and teachers are expected to wear face covering at all times
- Students are expected to maintain social distance to the best of abilities and when possible
- Students will sanitize hands as they exit the classroom
- Classrooms will be disinfected daily and as needed

Passing Period Procedures

- Teachers will dismiss classes orderly and socially distanced
- Students will sanitize hands as they exit the classroom
- Students are expected to maintain social distance to the best of abilities and when possible
- Follow hallway directions:
 - Hallways are one way when possible
 - Two way hallways are divided into lanes
- Students will proceed directly to their next class
- No loitering or congregating in the hallway
- Students are asked to not use the Restroom during passing period
- Students will sanitize hands as they enter the classroom

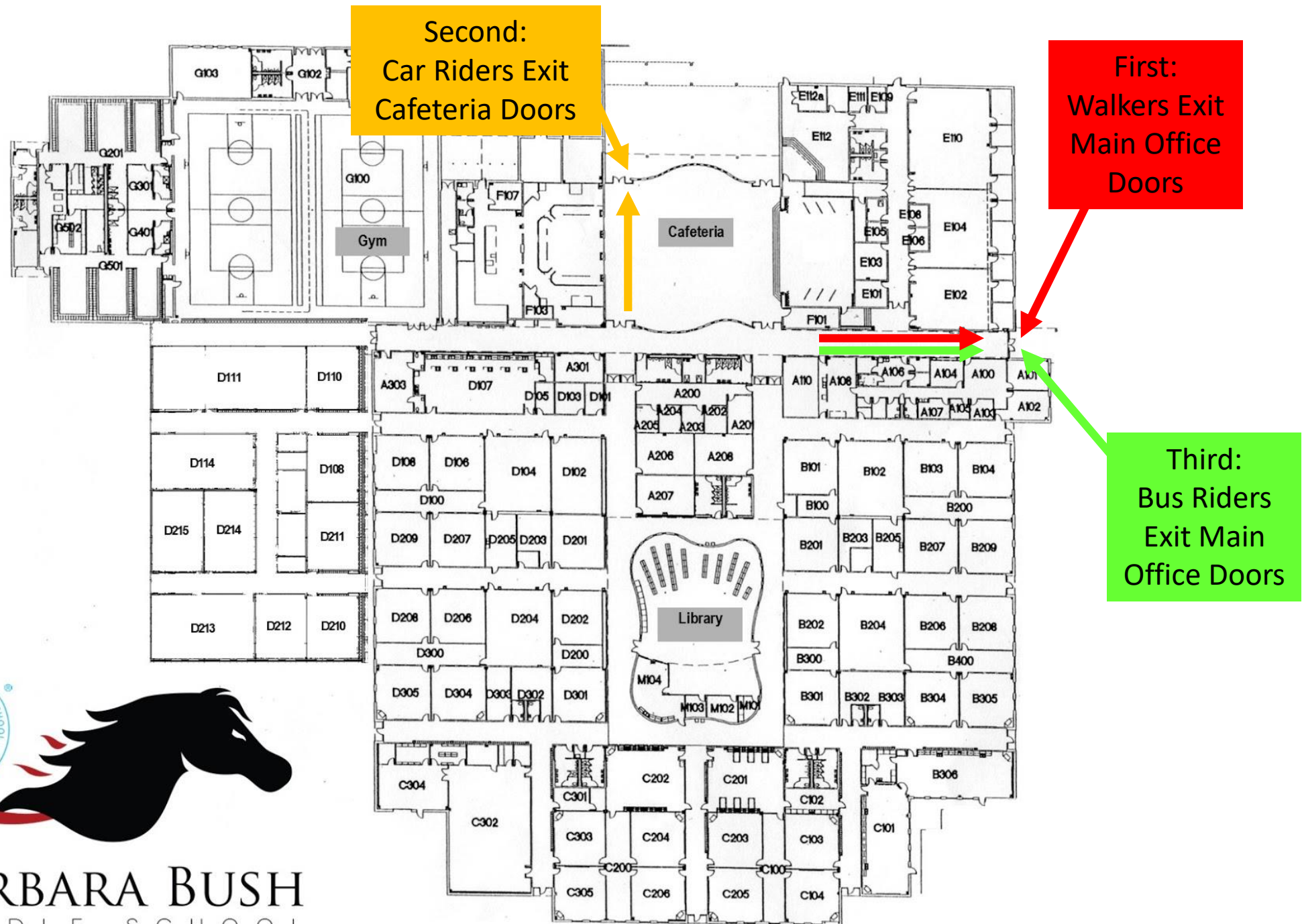
Lunch/Cafeteria Procedures

- Students will proceed immediately to cafeteria at their scheduled lunch
- Students are expected to maintain social distance
- Once students enter cafeteria they may choose a seat: 2 students may sit at each table, 1 student per desk - we ask for no moving of chairs
- Students purchasing a Grab & Go Meal will be dismissed by table to proceed to the lunch line and return to their seat
 - Families are encouraged to pre-pay for meals online in an effort to have cashless, touchless service - Payments made at: www.myschoolbucks.com
- Students will be called by table to throw away trash
- At the end of Lunch, Students will be dismissed by table

Afternoon Dismissal Procedures

- Staggered dismissal by transportation by loudspeaker announcement starting at 4:10
 - 4:10 - Walkers will exit the Main Office Doors
 - Students expected to immediately leave campus
 - 4:13 - Car Riders will exit the Cafeteria Doors
 - Students will enter vehicle at curb
 - Students waiting should maintain social distance
 - 4:15 - Bus Riders will exit the Main Office Doors
 - Students expected to immediately board Bus
- No loitering/congregating and Students are expected to maintain social distance to the best of abilities and when possible

Afternoon Dismissal Procedures



BARBARA BUSH
MIDDLE SCHOOL

Bus Transportation

- Students must wear a face covering when entering/riding the bus
- Students will sanitize hands on bus
- Bus route information can be found on the CFBISD website under Transportation utilizing *Infofinder*
- Families need to complete a registration card for students riding bus through the *Infofinder* link on the CFBISD website
- Bus Transportation questions can be directed to: cfbbusroutes@cfbisd.edu



BARBARA BUSH
M I D D L E S C H O O L

It's a GREAT day to be a BRONCO!

2020-2021